

## Auburn Public Schools 2025-2026

### Positive Partnerships, Relationships, and Success

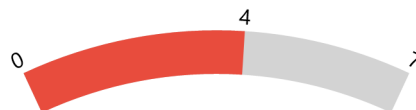


**ESU Services Implemented**

ESU Service Hours ( 18 )

ESU Service Recipients ( 2 )

### Postsecondary, Career, and Civic Readiness



**ESU Services Implemented**

ESU Service Hours ( 36.5 )

ESU Service Recipients ( 51 )

### Educational Opportunities and Access



**ESU Services Implemented**

ESU Service Hours ( 38 )

ESU Service Recipients ( 7 )

### Educator Effectiveness

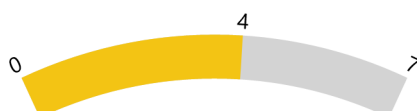


**ESU Services Implemented**

ESU Service Hours ( 70.5 )

ESU Service Recipients ( 60 )

### Student Achievement and Growth



**ESU Services Implemented**

ESU Service Hours ( 36.5 )

ESU Service Recipients ( 51 )

### Leadership

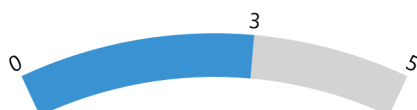


**ESU Services Implemented**

ESU Service Hours ( 43 )

ESU Service Recipients ( 11 )

### Transitions



**ESU Services Implemented**

ESU Service Hours ( 27.5 )

ESU Service Recipients ( 49 )