

## Crete Public Schools 2025-2026

### Positive Partnerships, Relationships, and Success

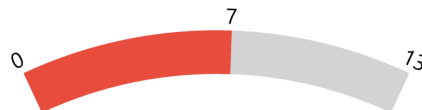


**ESU Services Implemented**

ESU Service Hours ( 18 )

ESU Service Recipients ( 2 )

### Postsecondary, Career, and Civic Readiness



**ESU Services Implemented**

ESU Service Hours ( 230 )

ESU Service Recipients ( 41 )

### Educational Opportunities and Access

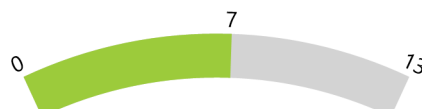


**ESU Services Implemented**

ESU Service Hours ( 35 )

ESU Service Recipients ( 23 )

### Educator Effectiveness

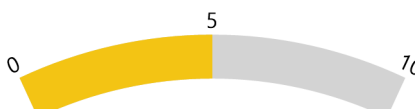


**ESU Services Implemented**

ESU Service Hours ( 68.5 )

ESU Service Recipients ( 22 )

### Student Achievement and Growth



**ESU Services Implemented**

ESU Service Hours ( 43 )

ESU Service Recipients ( 21 )

### Leadership

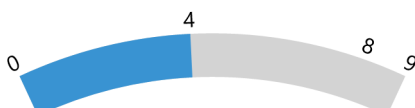


**ESU Services Implemented**

ESU Service Hours ( 216 )

ESU Service Recipients ( 26 )

### Transitions



**ESU Services Implemented**

ESU Service Hours ( 39.5 )

ESU Service Recipients ( 16 )