

## Shickley Public Schools 2025-2026

### Positive Partnerships, Relationships, and Success

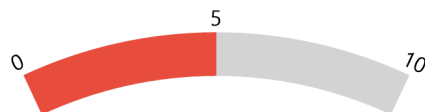


**ESU Services Implemented**

ESU Service Hours ( 27 )

ESU Service Recipients ( 3 )

### Postsecondary, Career, and Civic Readiness



**ESU Services Implemented**

ESU Service Hours ( 135 )

ESU Service Recipients ( 102 )

### Educational Opportunities and Access

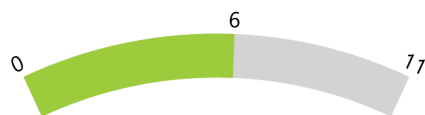


**ESU Services Implemented**

ESU Service Hours ( 58.25 )

ESU Service Recipients ( 71 )

### Educator Effectiveness

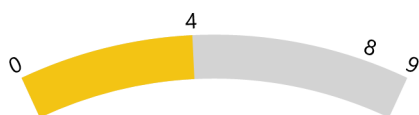


**ESU Services Implemented**

ESU Service Hours ( 109 )

ESU Service Recipients ( 42 )

### Student Achievement and Growth



**ESU Services Implemented**

ESU Service Hours ( 81 )

ESU Service Recipients ( 93 )

### Leadership

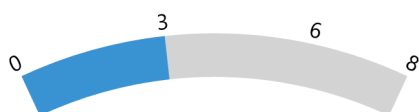


**ESU Services Implemented**

ESU Service Hours ( 95 )

ESU Service Recipients ( 19 )

### Transitions



**ESU Services Implemented**

ESU Service Hours ( 68 )

ESU Service Recipients ( 32 )