

## Osceola Public Schools 2025-2026

### Positive Partnerships, Relationships, and Success

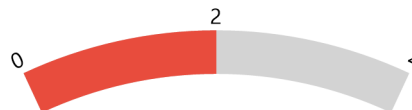


**ESU Services Implemented**

ESU Service Hours ( 13.5 )

ESU Service Recipients ( 22 )

### Postsecondary, Career, and Civic Readiness



**ESU Services Implemented**

ESU Service Hours ( 3.75 )

ESU Service Recipients ( 12 )

### Educational Opportunities and Access



**ESU Services Implemented**

ESU Service Hours ( 22 )

ESU Service Recipients ( 27 )

### Educator Effectiveness



**ESU Services Implemented**

ESU Service Hours ( 120.25 )

ESU Service Recipients ( 44 )

### Student Achievement and Growth



**ESU Services Implemented**

ESU Service Hours ( 0.75 )

ESU Service Recipients ( 11 )

### Leadership

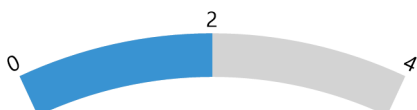


**ESU Services Implemented**

ESU Service Hours ( 133.5 )

ESU Service Recipients ( 36 )

### Transitions



**ESU Services Implemented**

ESU Service Hours ( 2.25 )

ESU Service Recipients ( 13 )