

## Hampton Public Schools 2025-2026

### Positive Partnerships, Relationships, and Success



Minimum for Scale should be less than  
Maximum of GaugePanel 'GaugePanel1'.

#### ESU Services Implemented

ESU Service Hours ( 0 )

ESU Service Recipients ( 0 )

### Postsecondary, Career, and Civic Readiness

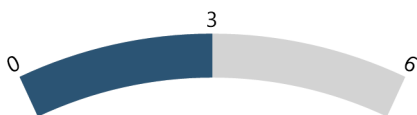


#### ESU Services Implemented

ESU Service Hours ( 48 )

ESU Service Recipients ( 39 )

### Educational Opportunities and Access



#### ESU Services Implemented

ESU Service Hours ( 53.25 )

ESU Service Recipients ( 26 )

### Educator Effectiveness



#### ESU Services Implemented

ESU Service Hours ( 46 )

ESU Service Recipients ( 38 )

### Student Achievement and Growth



#### ESU Services Implemented

ESU Service Hours ( 46 )

ESU Service Recipients ( 38 )

### Leadership



#### ESU Services Implemented

ESU Service Hours ( 2 )

ESU Service Recipients ( 1 )

### Transitions



#### ESU Services Implemented

ESU Service Hours ( 50.75 )

ESU Service Recipients ( 40 )