

## Sumner-Eddyville-Miller Schs 2025-2026

### Positive Partnerships, Relationships, and Success



**ESU Services Implemented**

ESU Service Hours ( 0 )

ESU Service Recipients ( 0 )

### Postsecondary, Career, and Civic Readiness

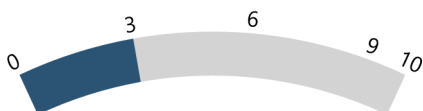


**ESU Services Implemented**

ESU Service Hours ( 22.5 )

ESU Service Recipients ( 34 )

### Educational Opportunities and Access



**ESU Services Implemented**

ESU Service Hours ( 23.25 )

ESU Service Recipients ( 34 )

### Educator Effectiveness



**ESU Services Implemented**

ESU Service Hours ( 50 )

ESU Service Recipients ( 8 )

### Student Achievement and Growth

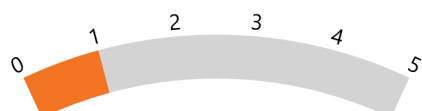


**ESU Services Implemented**

ESU Service Hours ( 28.25 )

ESU Service Recipients ( 37 )

### Leadership

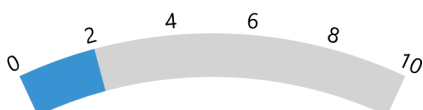


**ESU Services Implemented**

ESU Service Hours ( 23.25 )

ESU Service Recipients ( 2 )

### Transitions



**ESU Services Implemented**

ESU Service Hours ( 21 )

ESU Service Recipients ( 3 )