

## Ord Public Schools 2025-2026

### Positive Partnerships, Relationships, and Success



**ESU Services Implemented**

ESU Service Hours ( 1.25 )

ESU Service Recipients ( 3 )

### Postsecondary, Career, and Civic Readiness

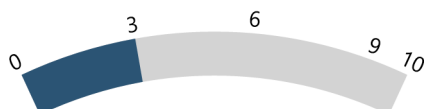


**ESU Services Implemented**

ESU Service Hours ( 5.5 )

ESU Service Recipients ( 5 )

### Educational Opportunities and Access



**ESU Services Implemented**

ESU Service Hours ( 19.25 )

ESU Service Recipients ( 7 )

### Educator Effectiveness



**ESU Services Implemented**

ESU Service Hours ( 63 )

ESU Service Recipients ( 7 )

### Student Achievement and Growth

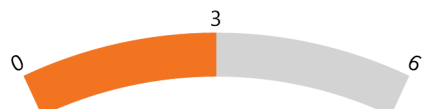


**ESU Services Implemented**

ESU Service Hours ( 5.25 )

ESU Service Recipients ( 4 )

### Leadership

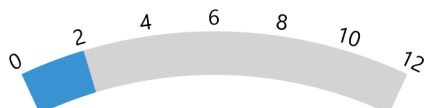


**ESU Services Implemented**

ESU Service Hours ( 59.25 )

ESU Service Recipients ( 7 )

### Transitions



**ESU Services Implemented**

ESU Service Hours ( 8.25 )

ESU Service Recipients ( 7 )