

## Ansley Public Schools 2025-2026

### Positive Partnerships, Relationships, and Success

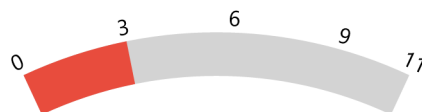


**ESU Services Implemented**

ESU Service Hours ( 5 )

ESU Service Recipients ( 44 )

### Postsecondary, Career, and Civic Readiness

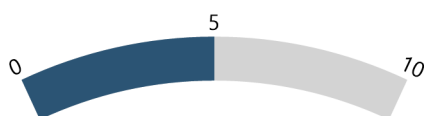


**ESU Services Implemented**

ESU Service Hours ( 54.5 )

ESU Service Recipients ( 11 )

### Educational Opportunities and Access



**ESU Services Implemented**

ESU Service Hours ( 35.8 )

ESU Service Recipients ( 52 )

### Educator Effectiveness

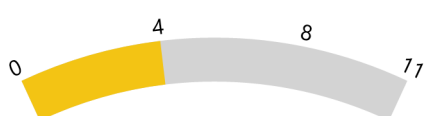


**ESU Services Implemented**

ESU Service Hours ( 85.5 )

ESU Service Recipients ( 15 )

### Student Achievement and Growth

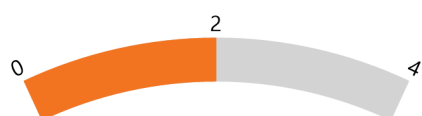


**ESU Services Implemented**

ESU Service Hours ( 60.25 )

ESU Service Recipients ( 12 )

### Leadership

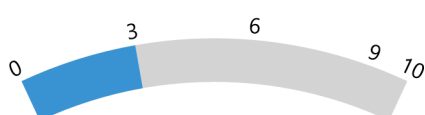


**ESU Services Implemented**

ESU Service Hours ( 30.25 )

ESU Service Recipients ( 47 )

### Transitions



**ESU Services Implemented**

ESU Service Hours ( 55.8 )

ESU Service Recipients ( 14 )