

## Overton Public Schools 2025-2026

### Positive Partnerships, Relationships, and Success

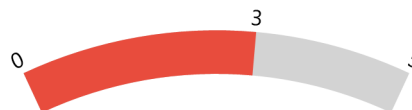


**ESU Services Implemented**

ESU Service Hours ( 0 )

ESU Service Recipients ( 0 )

### Postsecondary, Career, and Civic Readiness



**ESU Services Implemented**

ESU Service Hours ( 10.5 )

ESU Service Recipients ( 1 )

### Educational Opportunities and Access



**ESU Services Implemented**

ESU Service Hours ( 22.25 )

ESU Service Recipients ( 10 )

### Educator Effectiveness

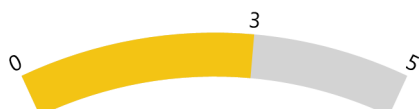


**ESU Services Implemented**

ESU Service Hours ( 10.5 )

ESU Service Recipients ( 1 )

### Student Achievement and Growth



**ESU Services Implemented**

ESU Service Hours ( 10.5 )

ESU Service Recipients ( 1 )

### Leadership

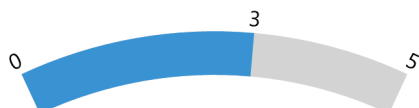


**ESU Services Implemented**

ESU Service Hours ( 0 )

ESU Service Recipients ( 0 )

### Transitions



**ESU Services Implemented**

ESU Service Hours ( 17 )

ESU Service Recipients ( 3 )