

**Gibbon Public Schools 2024-2025**

**Positive Partnerships, Relationships, and Success**

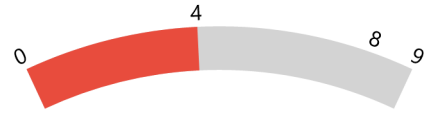


**ESU Services Implemented**

ESU Service Hours ( 54 )

ESU Service Recipients ( 14 )

**Postsecondary, Career, and Civic Readiness**



**ESU Services Implemented**

ESU Service Hours ( 46.75 )

ESU Service Recipients ( 10 )

**Educational Opportunities and Access**

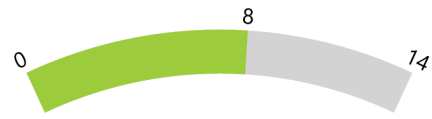


**ESU Services Implemented**

ESU Service Hours ( 122 )

ESU Service Recipients ( 60 )

**Educator Effectiveness**

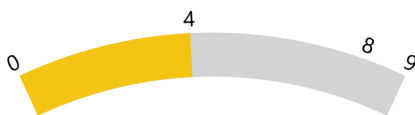


**ESU Services Implemented**

ESU Service Hours ( 80.75 )

ESU Service Recipients ( 20 )

**Student Achievement and Growth**



**ESU Services Implemented**

ESU Service Hours ( 46.75 )

ESU Service Recipients ( 10 )

**Leadership**

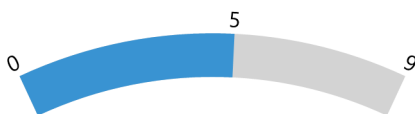


**ESU Services Implemented**

ESU Service Hours ( 67 )

ESU Service Recipients ( 22 )

**Transitions**



**ESU Services Implemented**

ESU Service Hours ( 58.25 )

ESU Service Recipients ( 14 )