

## Arnold Public Schools 2025-2026

### Positive Partnerships, Relationships, and Success



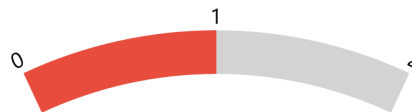
Minimum for Scale should be less than Maximum of GaugePanel 'GaugePanel1'.

#### ESU Services Implemented

ESU Service Hours ( 0 )

ESU Service Recipients ( 0 )

### Postsecondary, Career, and Civic Readiness

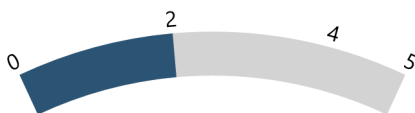


#### ESU Services Implemented

ESU Service Hours ( 28.25 )

ESU Service Recipients ( 12 )

### Educational Opportunities and Access



#### ESU Services Implemented

ESU Service Hours ( 14 )

ESU Service Recipients ( 6 )

### Educator Effectiveness



#### ESU Services Implemented

ESU Service Hours ( 36.5 )

ESU Service Recipients ( 40 )

### Student Achievement and Growth



#### ESU Services Implemented

ESU Service Hours ( 32.5 )

ESU Service Recipients ( 38 )

### Leadership



#### ESU Services Implemented

ESU Service Hours ( 4 )

ESU Service Recipients ( 2 )

### Transitions



#### ESU Services Implemented

ESU Service Hours ( 37 )

ESU Service Recipients ( 16 )