

**Elba Public Schools 2025-2026**

**Positive Partnerships, Relationships, and Success**

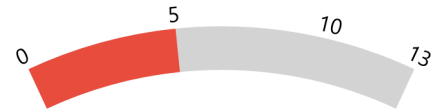


**ESU Services Implemented**

ESU Service Hours ( 10.75 )

ESU Service Recipients ( 59 )

**Postsecondary, Career, and Civic Readiness**

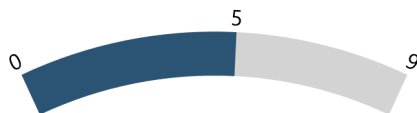


**ESU Services Implemented**

ESU Service Hours ( 105.25 )

ESU Service Recipients ( 60 )

**Educational Opportunities and Access**

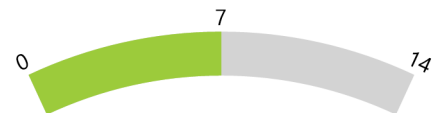


**ESU Services Implemented**

ESU Service Hours ( 95.5 )

ESU Service Recipients ( 75 )

**Educator Effectiveness**

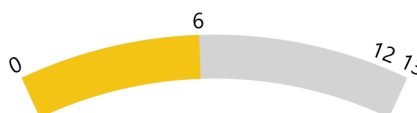


**ESU Services Implemented**

ESU Service Hours ( 149.25 )

ESU Service Recipients ( 88 )

**Student Achievement and Growth**



**ESU Services Implemented**

ESU Service Hours ( 105.25 )

ESU Service Recipients ( 60 )

**Leadership**

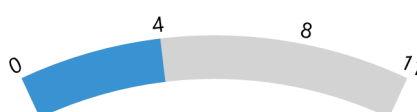


**ESU Services Implemented**

ESU Service Hours ( 118 )

ESU Service Recipients ( 68 )

**Transitions**



**ESU Services Implemented**

ESU Service Hours ( 37 )

ESU Service Recipients ( 56 )