

## Exeter-Milligan-Friend Public Schools 2025-2026

### Positive Partnerships, Relationships, and Success

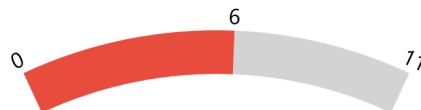


**ESU Services Implemented**

ESU Service Hours ( 9 )

ESU Service Recipients ( 1 )

### Postsecondary, Career, and Civic Readiness



**ESU Services Implemented**

ESU Service Hours ( 58.5 )

ESU Service Recipients ( 87 )

### Educational Opportunities and Access

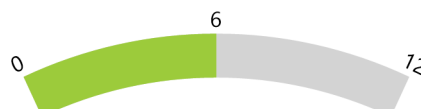


**ESU Services Implemented**

ESU Service Hours ( 32.25 )

ESU Service Recipients ( 58 )

### Educator Effectiveness

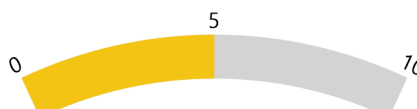


**ESU Services Implemented**

ESU Service Hours ( 67 )

ESU Service Recipients ( 36 )

### Student Achievement and Growth



**ESU Services Implemented**

ESU Service Hours ( 58.5 )

ESU Service Recipients ( 87 )

### Leadership

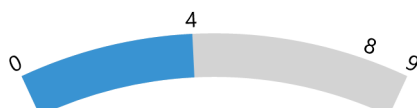


**ESU Services Implemented**

ESU Service Hours ( 15 )

ESU Service Recipients ( 2 )

### Transitions



**ESU Services Implemented**

ESU Service Hours ( 52 )

ESU Service Recipients ( 34 )