

## Santee Community Schools 2025-2026

### Positive Partnerships, Relationships, and Success



**ESU Services Implemented**

ESU Service Hours ( 30 )

ESU Service Recipients ( 16 )

### Postsecondary, Career, and Civic Readiness

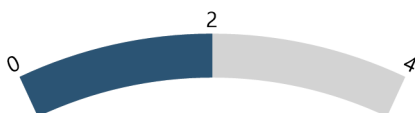


**ESU Services Implemented**

ESU Service Hours ( 75.5 )

ESU Service Recipients ( 41 )

### Educational Opportunities and Access

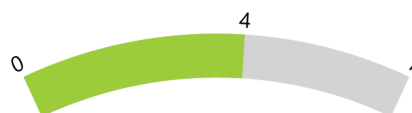


**ESU Services Implemented**

ESU Service Hours ( 33 )

ESU Service Recipients ( 27 )

### Educator Effectiveness



**ESU Services Implemented**

ESU Service Hours ( 102.5 )

ESU Service Recipients ( 47 )

### Student Achievement and Growth

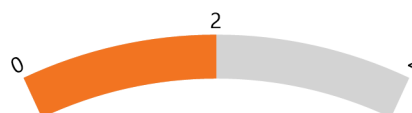


**ESU Services Implemented**

ESU Service Hours ( 75.5 )

ESU Service Recipients ( 41 )

### Leadership



**ESU Services Implemented**

ESU Service Hours ( 57 )

ESU Service Recipients ( 22 )

### Transitions



**ESU Services Implemented**

ESU Service Hours ( 75.5 )

ESU Service Recipients ( 41 )