

## Ponca Public Schools 2025-2026

### Positive Partnerships, Relationships, and Success



**ESU Services Implemented**

ESU Service Hours ( 24 )

ESU Service Recipients ( 2 )

### Postsecondary, Career, and Civic Readiness

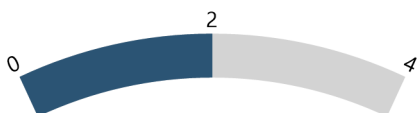


**ESU Services Implemented**

ESU Service Hours ( 36 )

ESU Service Recipients ( 10 )

### Educational Opportunities and Access

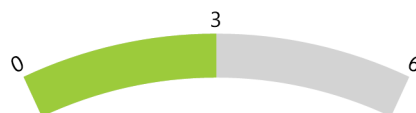


**ESU Services Implemented**

ESU Service Hours ( 24 )

ESU Service Recipients ( 2 )

### Educator Effectiveness

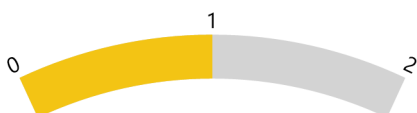


**ESU Services Implemented**

ESU Service Hours ( 86.5 )

ESU Service Recipients ( 15 )

### Student Achievement and Growth

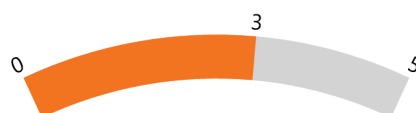


**ESU Services Implemented**

ESU Service Hours ( 36 )

ESU Service Recipients ( 10 )

### Leadership



**ESU Services Implemented**

ESU Service Hours ( 56.5 )

ESU Service Recipients ( 6 )

### Transitions



**ESU Services Implemented**

ESU Service Hours ( 36 )

ESU Service Recipients ( 10 )